

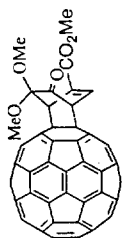
1.2190  
1.5999

3.5714  
3.6002  
3.9899

4.9079  
4.9187  
5.3653  
5.3681

7.2399  
8.0073  
8.0100  
8.0182  
8.0209

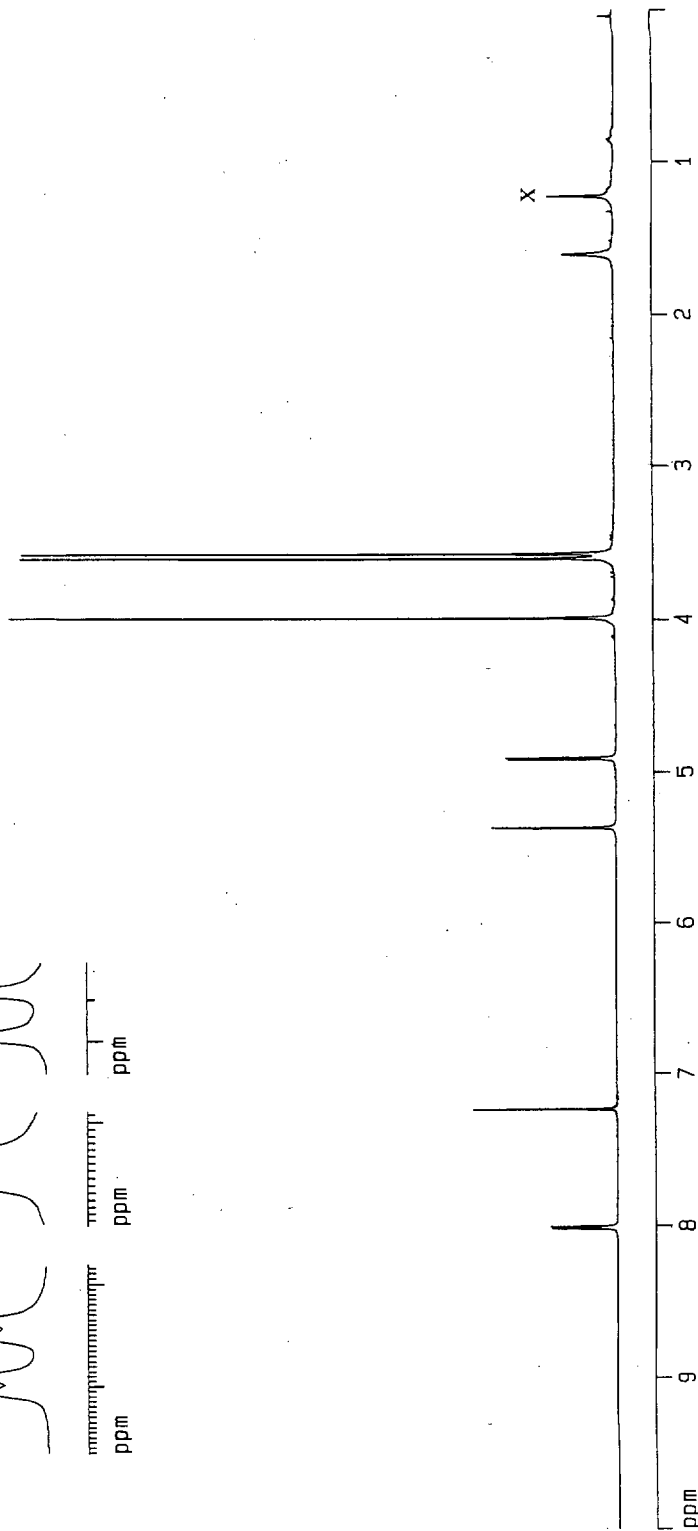
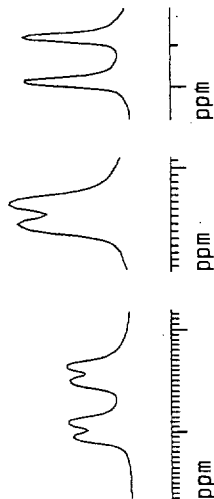
ppm



4.9079  
4.9187  
ppm

5.3653  
5.3681  
ppm

8.0073  
8.0100  
8.0182  
8.0209  
ppm



Data Parameters  
C60-4ester  
1  
1

Acquisition Parameters

991115  
0.52  
spect

5 mm TXI 13C

32768  
COC13  
8  
0

8389.262 Hz  
0.256020 Hz

1.9530228 sec  
512

59.600 usec  
4.50 usec

300.0 K

1.50000000 sec  
5.00 usec

600.2481585 MHz

1H  
6.00 dB

Processing parameters

32768  
600.2456955 MHz

EM  
0  
0.50 Hz

0  
1.00

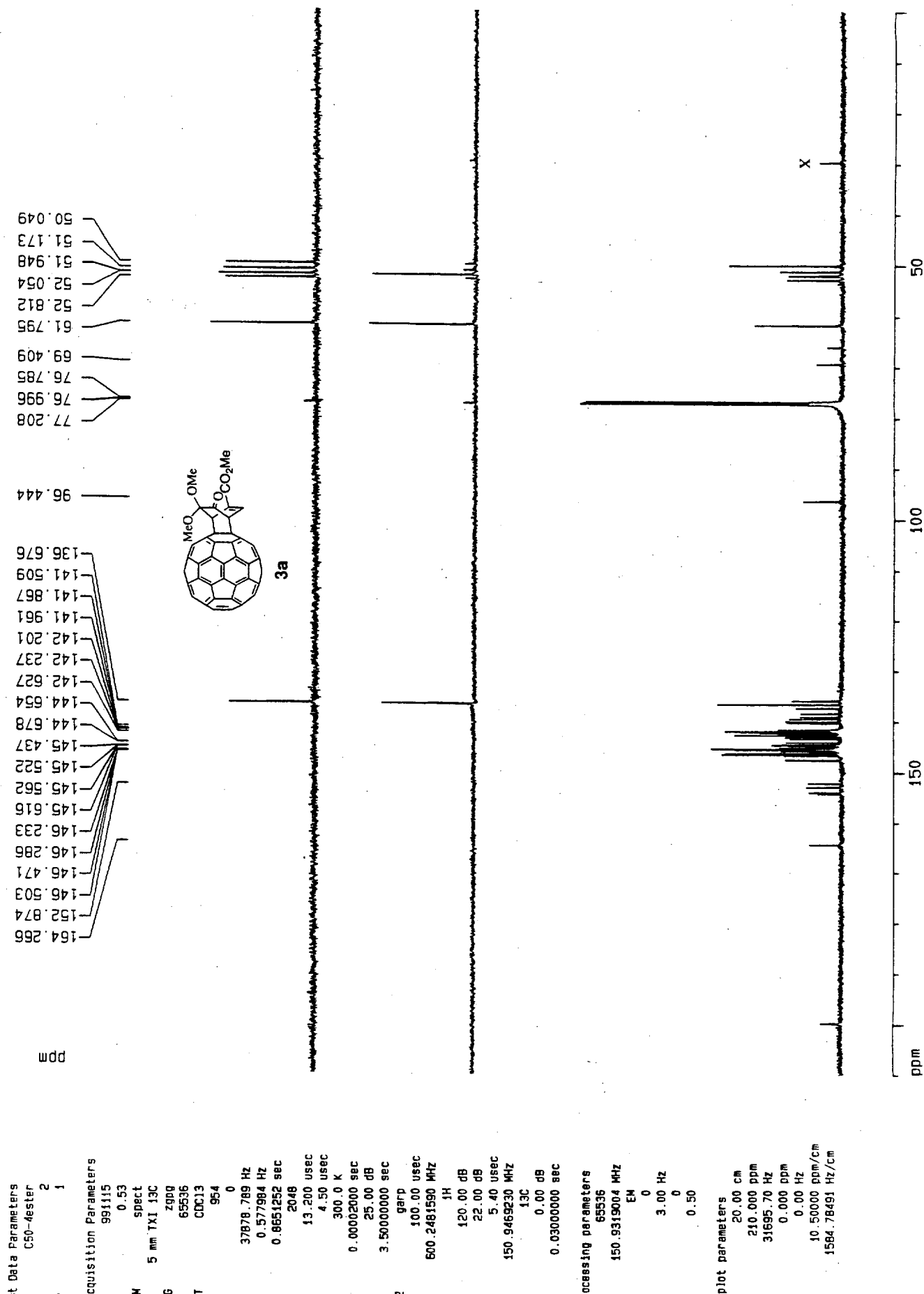
Plot parameters

20.00 cm  
10.000 ppm

6002.46 Hz  
0.000 ppm

0.00 Hz  
0.50000 ppm/cm

300.12283 Hz/cm



3

Data Parameters  
C60-4Me

1 1

Acquisition Parameters

990918  
23.10  
spect  
5 mm TXI J3C  
zg  
32768  
COC13  
32  
0  
8389.262 Hz  
0.256020 Hz  
1.9530228 sec  
512  
59.600 usec  
4.50 usec  
300.0 K  
1.5000000 sec  
5.00 usec  
600.2481585 MHz  
HI  
6.00 dB

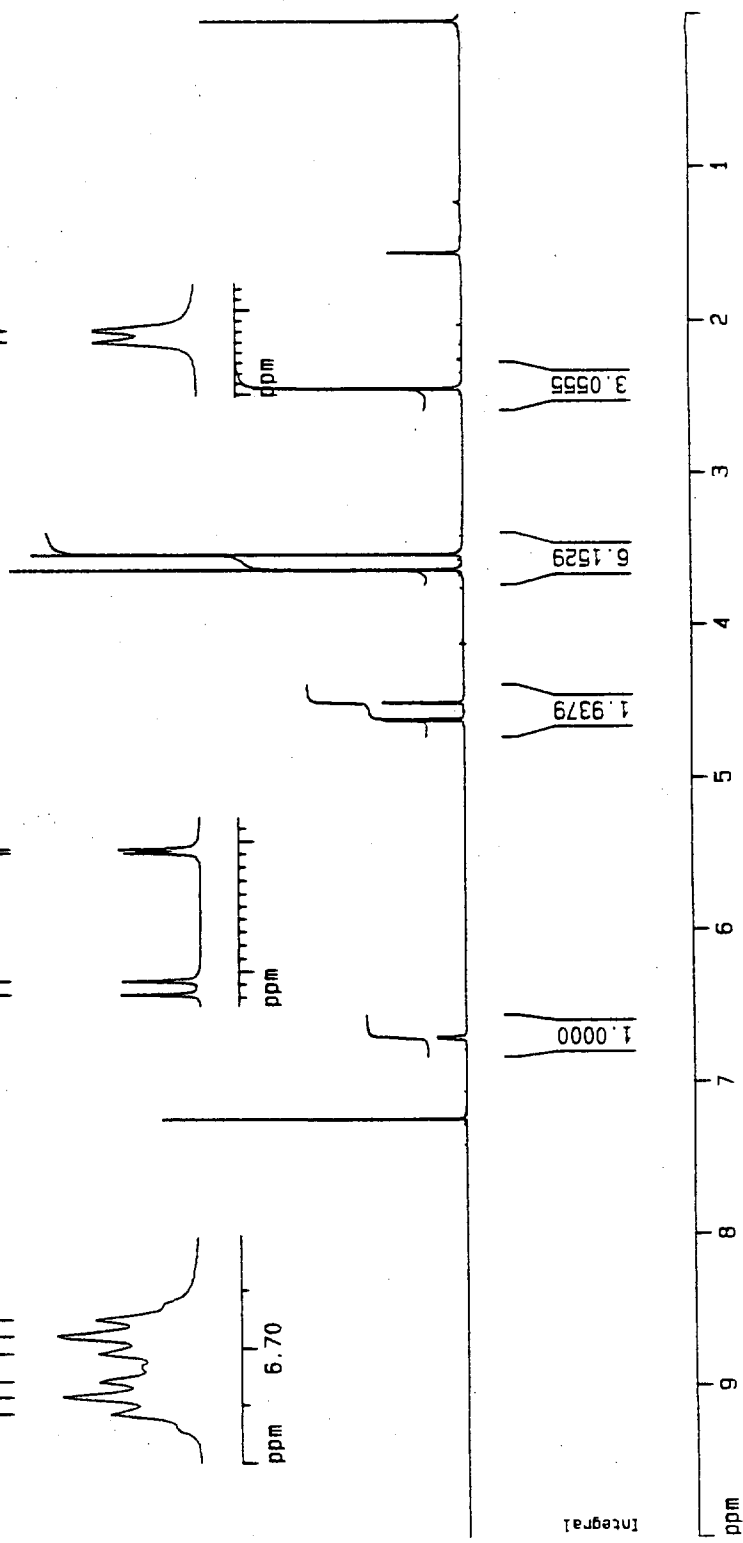
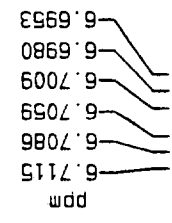
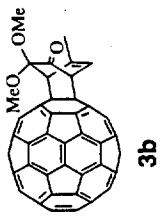
Processing parameters

32768  
600.2456842 MHz

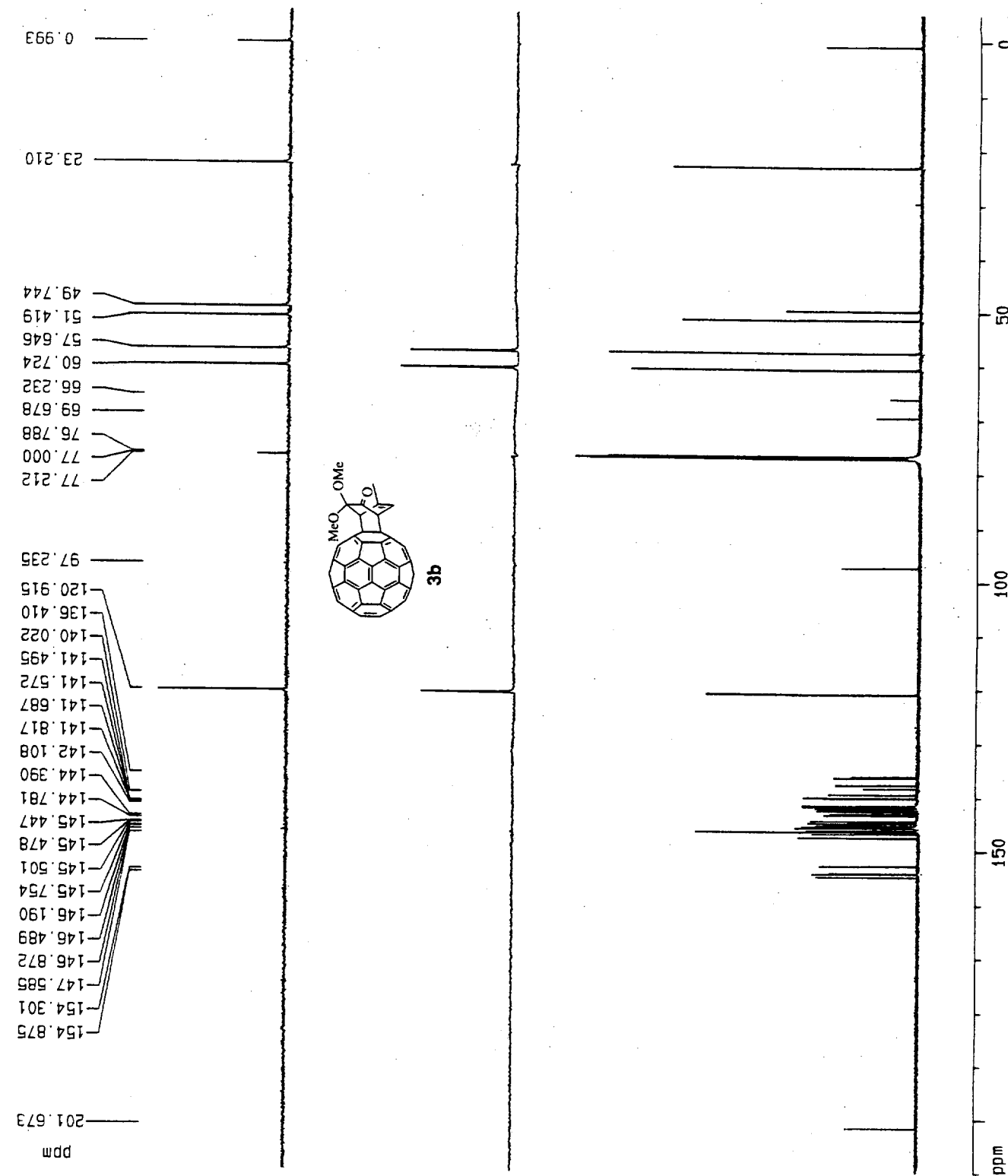
no  
0.00 Hz  
0

Global parameters

20.00 cm  
10.000 ppm  
6002.46 Hz  
0.000 ppm  
0.00 Hz  
0.50000 ppm/cm  
300.12283 Hz/cm

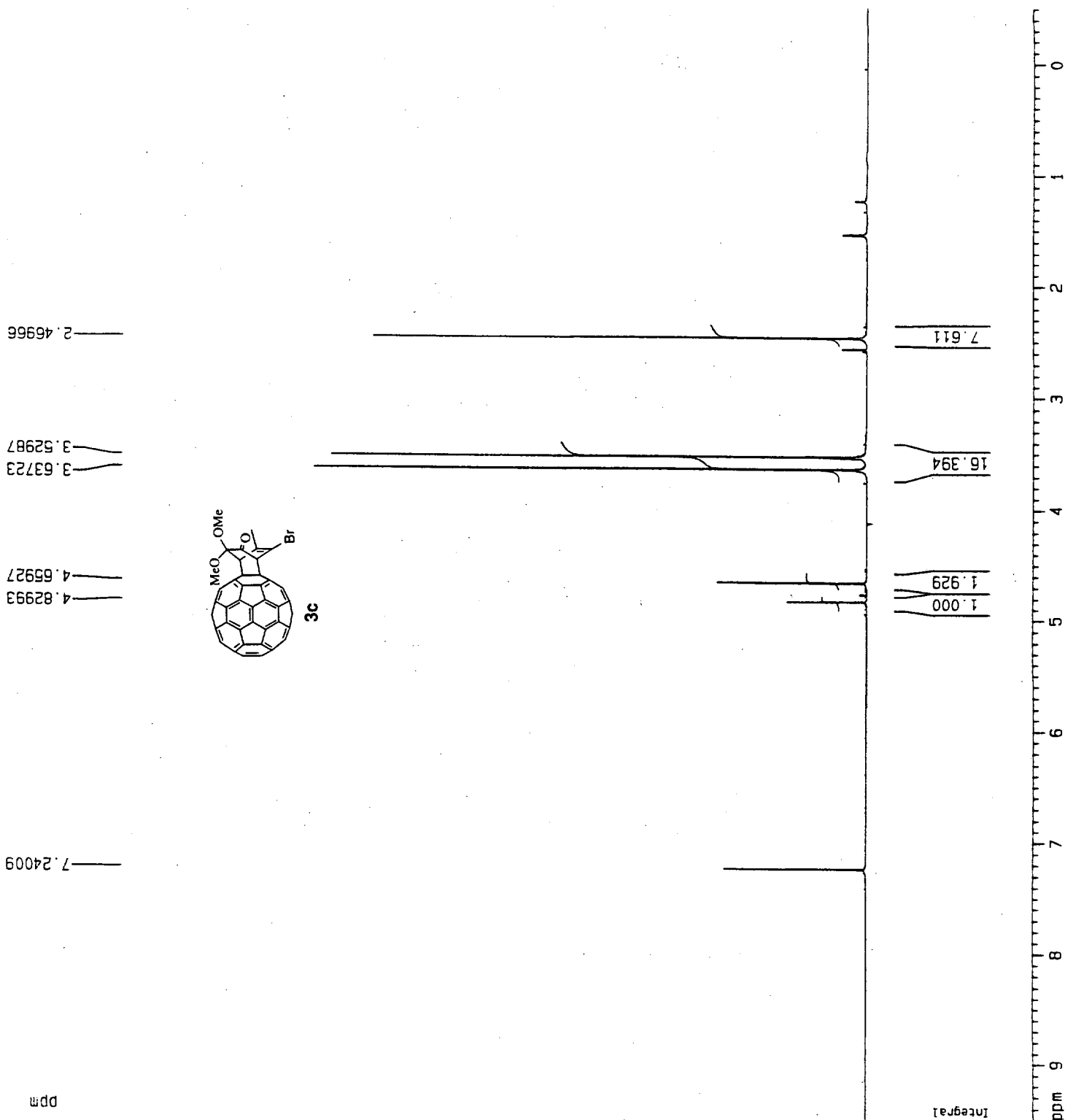


4



**1H NMR Parameters**  
 C60-4Me  
 2  
 1  
 990918  
 23.11  
 spect  
 5 mm TXI 13C  
 zppg  
 65536  
 CDC13  
 5120  
 0  
 37878.789 Hz  
 0.577984 Hz  
 0.8651252 sec  
 20.48  
 13.200 usec  
 4.50 usec  
 300.0 K  
 0.00002000 sec  
 25.00 dB  
 3.50000000 sec  
 garp  
 100.00 usec  
 600.2481590 MHz  
 120.00 dB  
 22.00 dB  
 5.40 usec  
 150.9469230 MHz  
 13C  
 0.00 dB  
 0.03000000 sec  
**Processing parameters**  
 32768  
 150.9318981 MHz  
 EM  
 0  
 0.50 Hz  
 0  
 0.50  
**Plot parameters**  
 20.00 cm  
 210.000 ppm  
 31695.70 Hz  
 -5.000 ppm  
 -754.66 Hz  
 10.75000 ppm/cm  
 1622.51819 Hz/cm

5



Data Parameters

C50-4Me-5Br

1

1

Acquisition Parameters

991022

4.27

spect

5 mm 1X1 13C

19

16384

CDC13

16

0

7183.908 Hz

0.438471 Hz

1.1403764 sec

512

69.600 usec

4.50 usec

300.0 K

1.00000000 sec

10.00 usec

600.2481585 MHz

1H

0.00 dB

Processing parameters

16384

600.2456850 MHz

na

0

0.00 Hz

0

1.00

Plot parameters

20.00 cm

9.500 ppm

5702.33 Hz

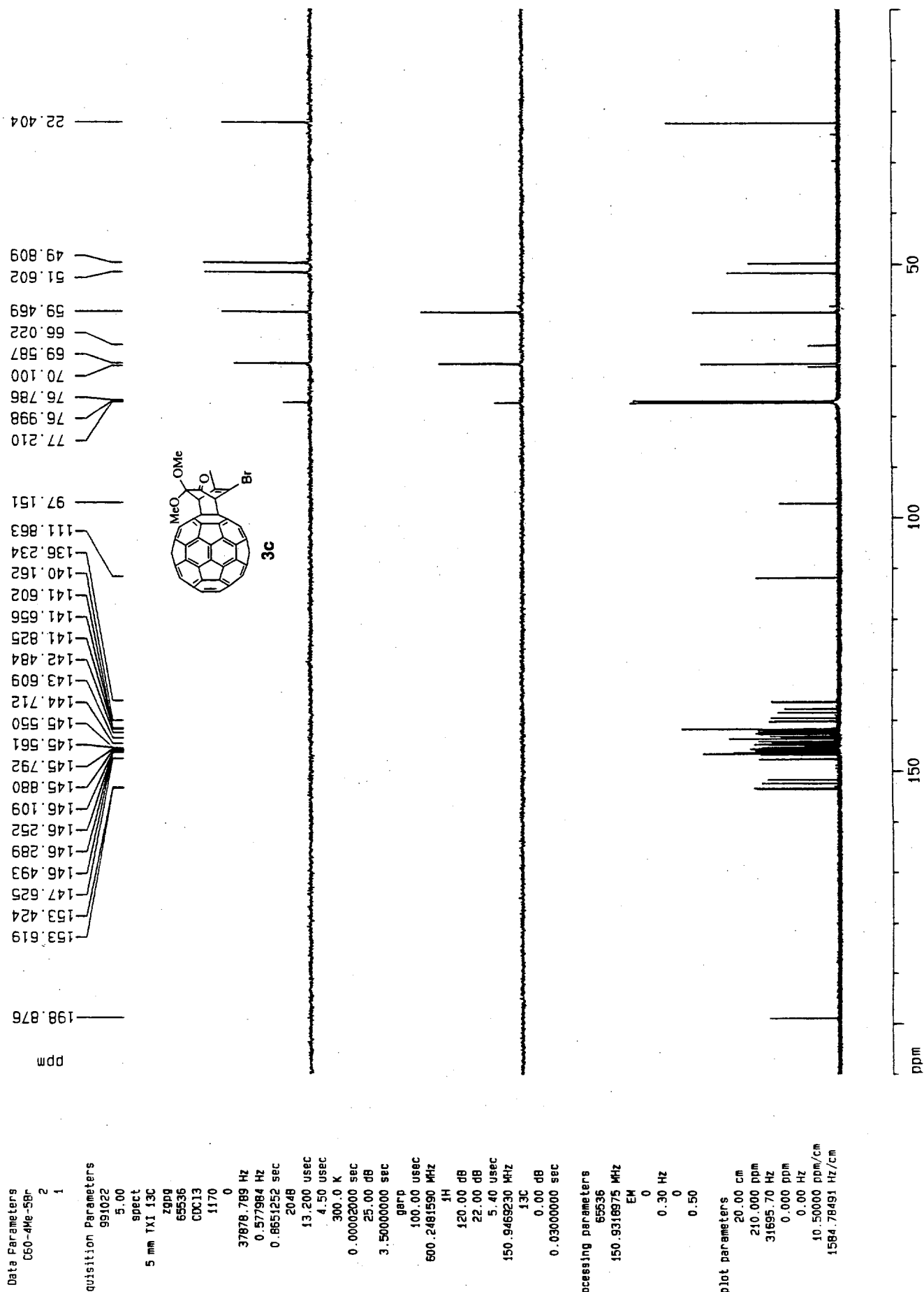
-0.500 ppm

-300.12 Hz

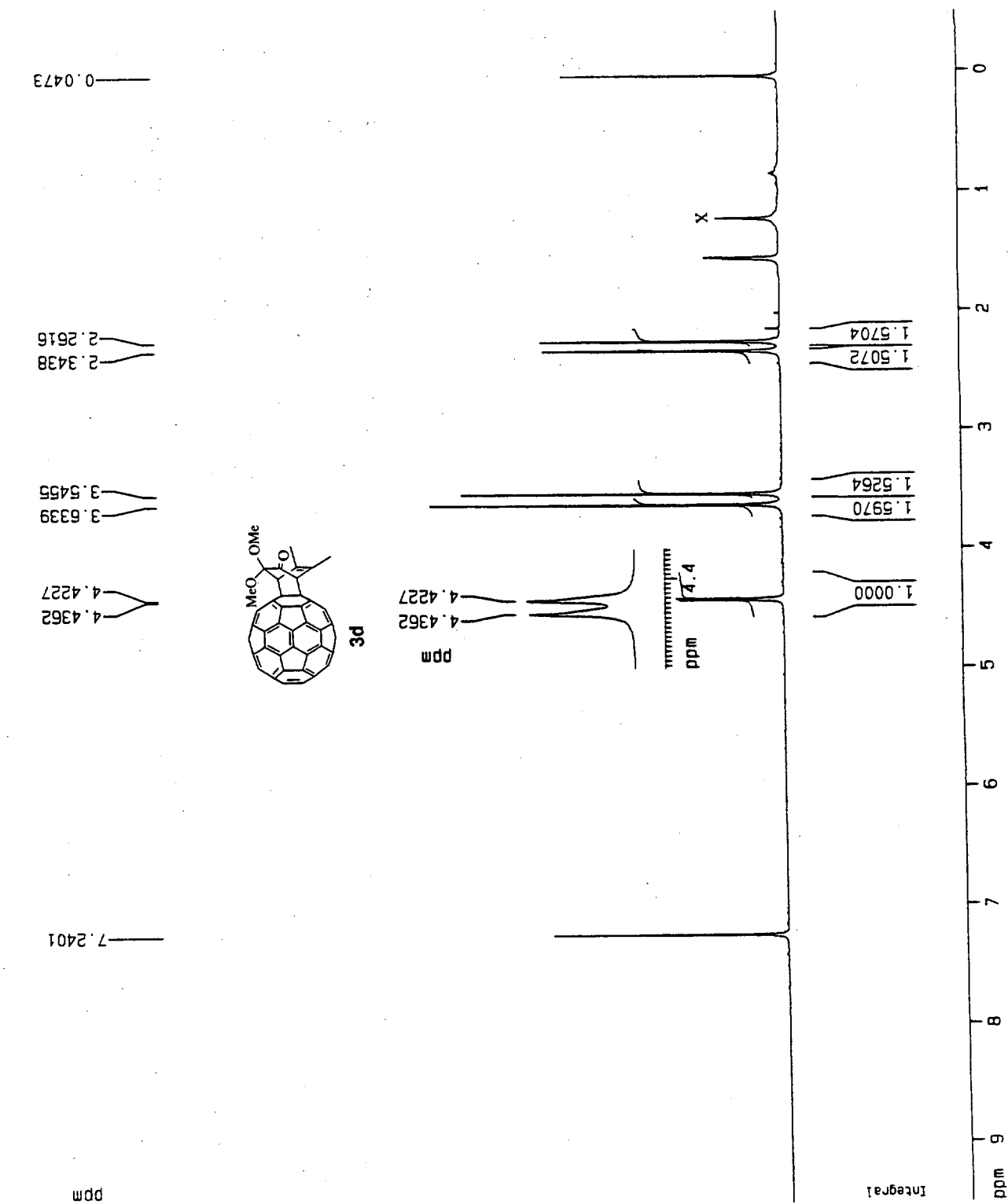
0.50000 ppm/cm

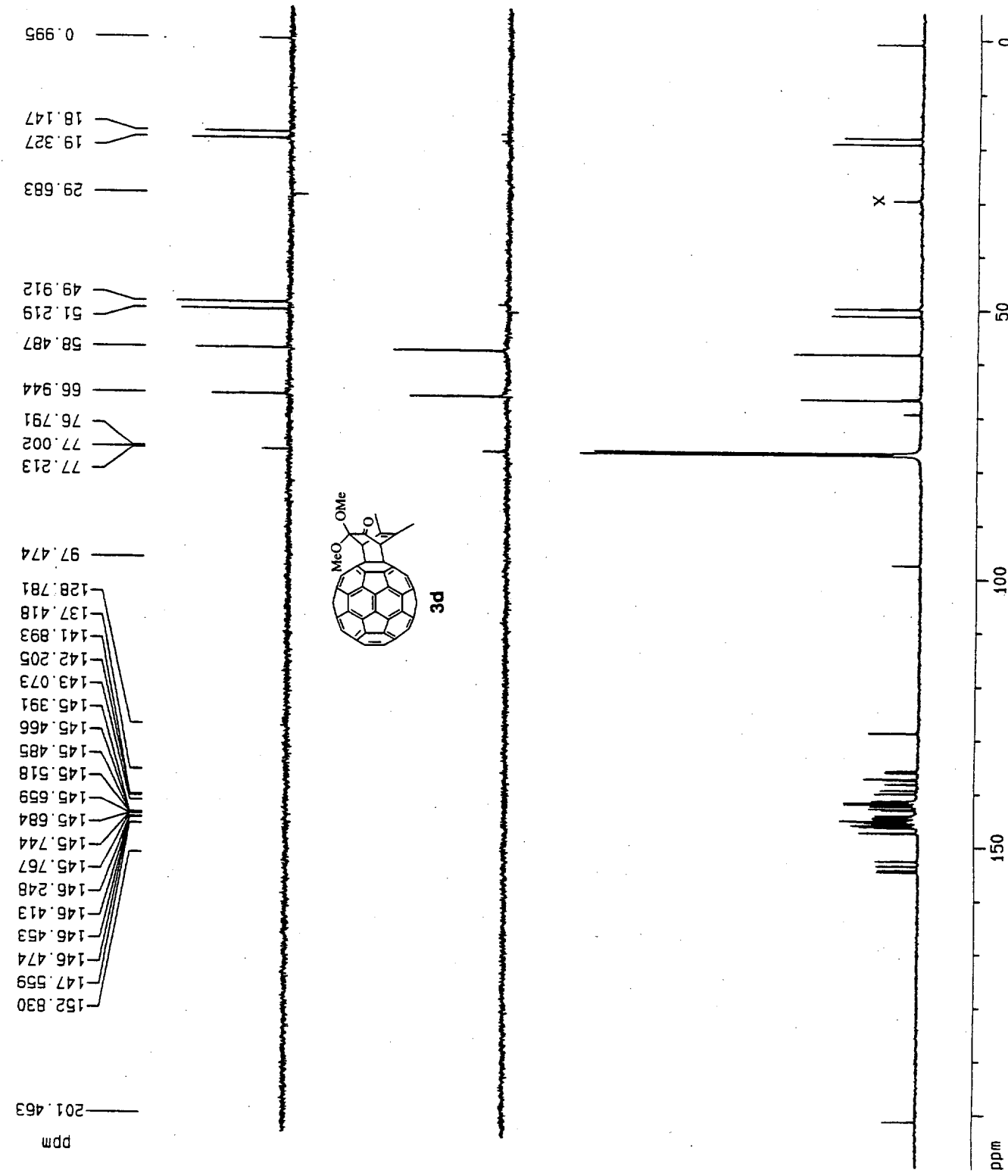
300.12283 Hz/cm

6



7





Data Parameters  
 C60-d1Me 1  
 2  
 1  
 Acquisition Parameters  
 990918  
 3.02  
 spect  
 5 mm TXI 13C  
 zppg  
 65536  
 CDC13  
 2560  
 0  
 33333.332 Hz  
 0.508626 Hz  
 0.983090 sec  
 2048  
 15.000 usec  
 4.50 usec  
 300.0 K  
 0.000200 sec  
 25.00 dB  
 3.0000000 sec  
 garp  
 100.00 usec  
 600.2481590 MHz  
 1H  
 120.00 dB  
 22.00 dB  
 5.40 usec  
 150.9469230 MHz  
 13C  
 0.00 dB  
 0.03000000 sec  
 sing parameters  
 32768  
 150.9318975 MHz  
 EM  
 0  
 3.00 Hz  
 0  
 0.50  
 parameters  
 20.00 cm  
 210.000 ppm  
 31695.70 Hz  
 -5.000 ppm  
 -754.66 Hz  
 10.75000 ppm/cm  
 1622.51794 Hz/cm



9

1 Data Parameters

C60-5Me-4Br  
1  
1

2 Acquisition Parameters

990919  
13.30  
spect  
5 mm TXI 13C  
ZG  
32768  
COC13  
16  
0  
6389.262 Hz  
0.256020 Hz  
1.9530228 sec  
512  
59.600 usec  
4.50 usec  
300.0 K  
1.5000000 sec  
5.00 usec  
600.2481585 MHz

3 1H

6.00 dB

4 Processing Parameters

32768  
600.2455835 MHz  
EM

0

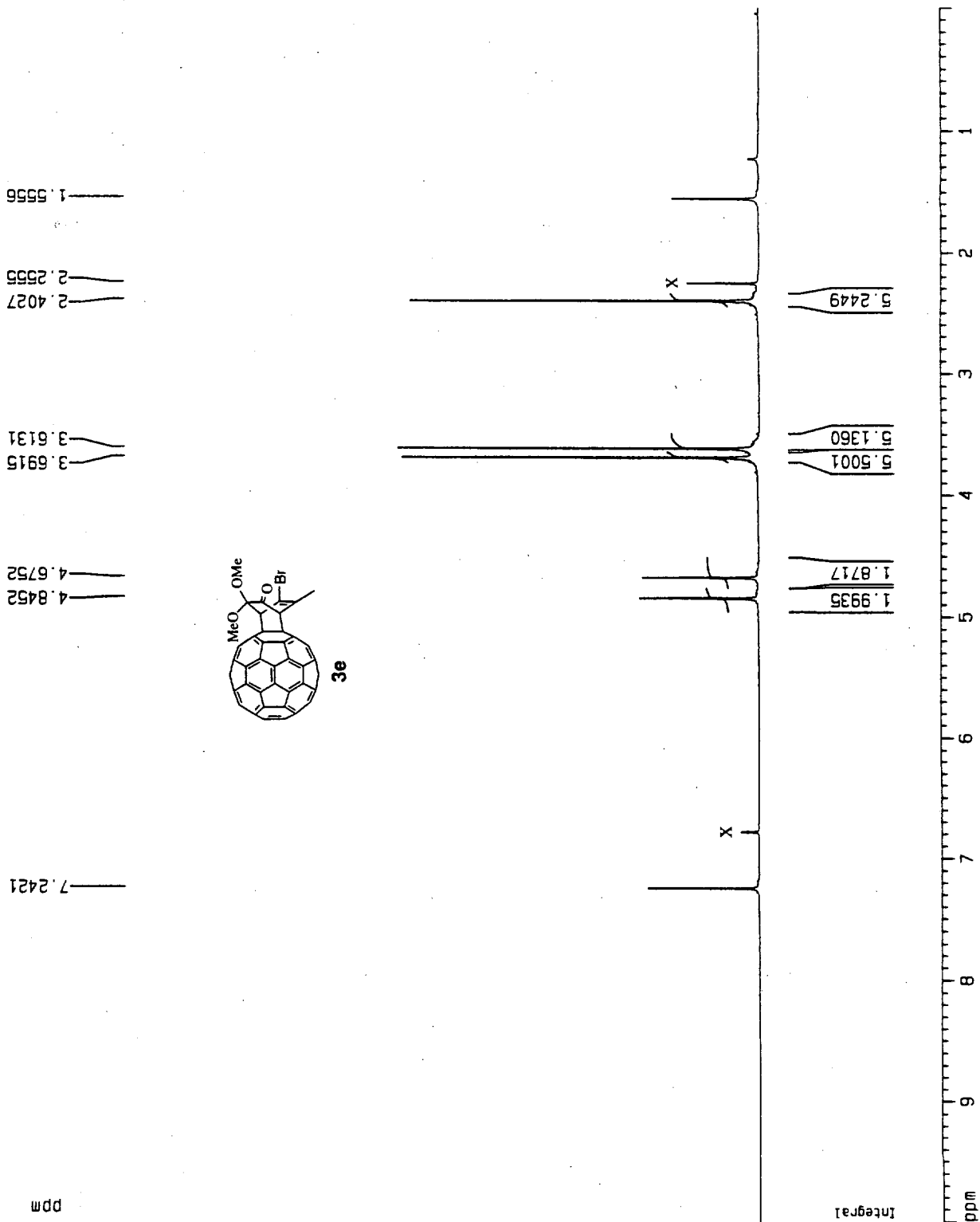
1.00 Hz

0

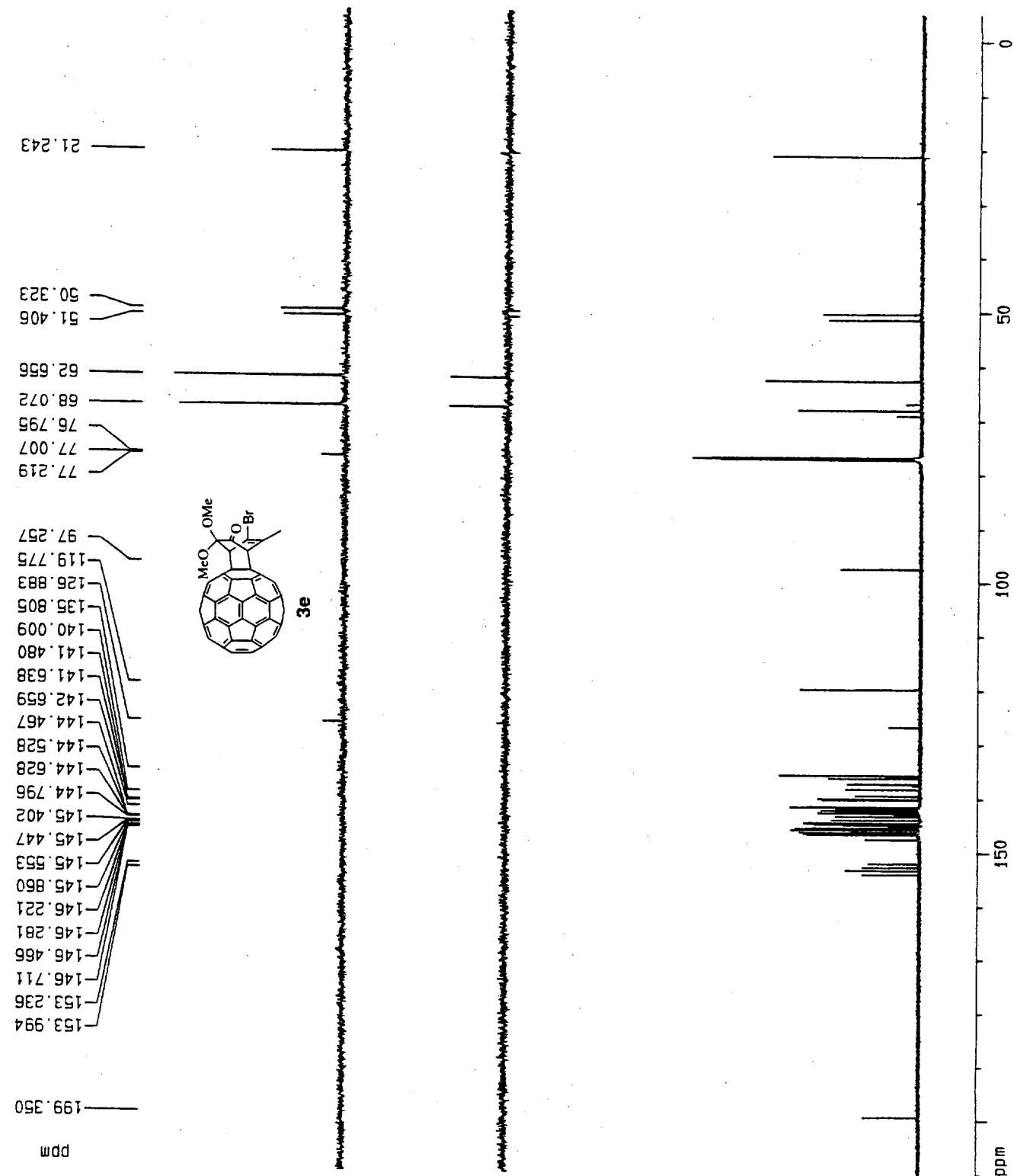
1.00

5 Plot Parameters

20.00 cm  
10.000 ppm  
6002.46 Hz  
0.000 cm  
0.00 Hz  
0.50000 ppm/cm  
300.12283 Hz/cm



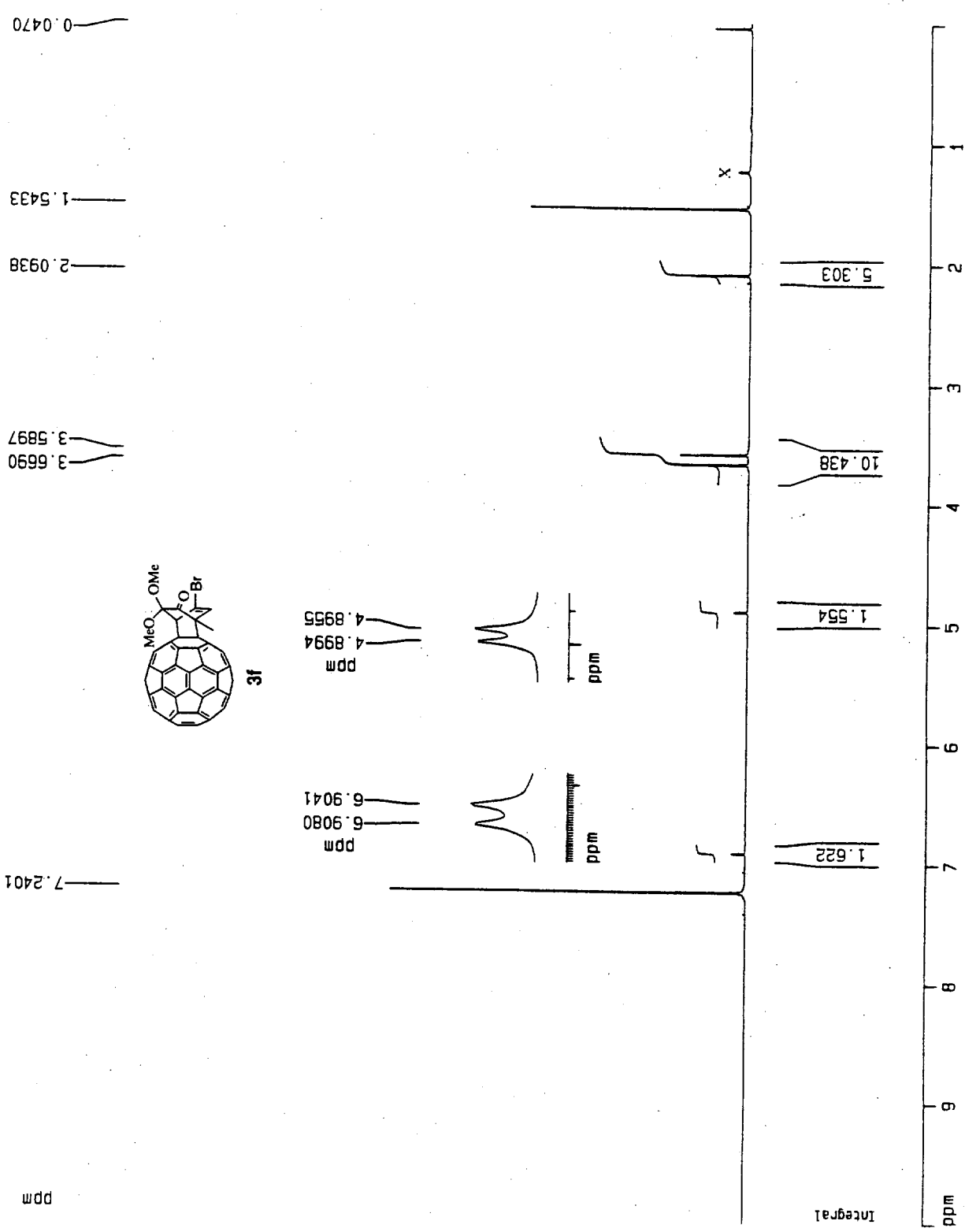
10



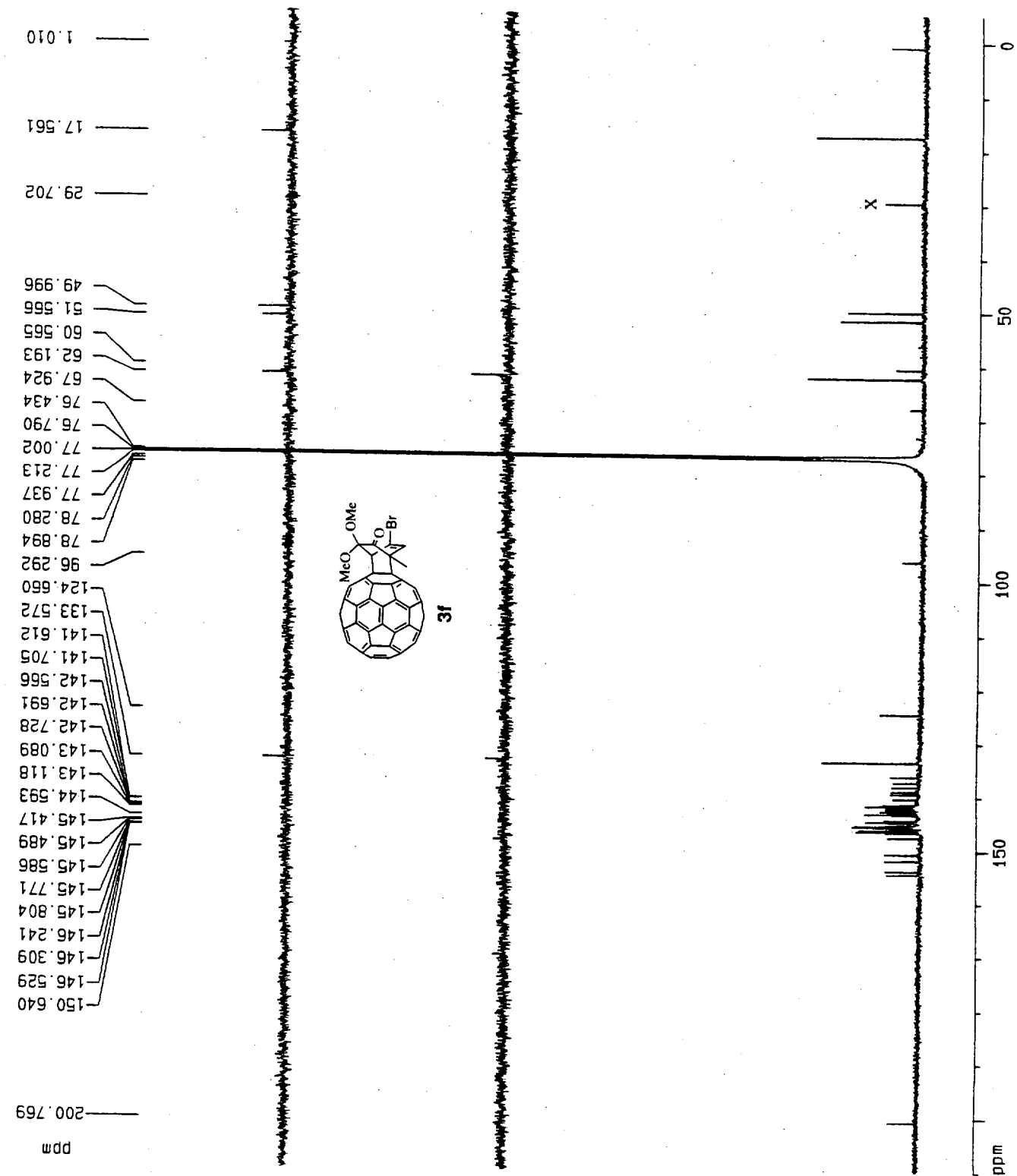
199.350  
153.994  
153.236  
146.711  
146.466  
146.281  
146.221  
145.860  
145.553  
145.447  
145.402  
144.796  
144.628  
144.528  
144.467  
142.659  
141.638  
141.480  
140.009  
135.805  
126.883  
119.775  
97.257  
77.219  
77.007  
76.795  
68.072  
62.656  
51.406  
50.323  
21.243  
ppm

Acquisition Parameters  
 990919  
 13.41  
 spect  
 5 mm TXI 13C  
 zgpg  
 65536  
 CDC13  
 4096  
 0  
 37878.789 Hz  
 0.577984 Hz  
 0.8651252 sec  
 2048  
 13.200 usec  
 4.50 usec  
 300.0 K  
 0.00002000 sec  
 25.00 dB  
 3.50000000 sec  
 garp  
 100.00 usec  
 600.2481590 MHz  
 1H  
 120.00 dB  
 22.00 dB  
 5.40 usec  
 150.9469230 MHz  
 13C  
 0.00 dB  
 0.03000000 sec  
 Processing Parameters  
 32768  
 150.9318981 MHz  
 no  
 0  
 0.00 Hz  
 0  
 0.50  
 Plot Parameters  
 20.00 cm  
 210.000 ppm  
 31695.70 Hz  
 -5.000 ppm  
 -754.66 Hz  
 10.75000 ppm/cm  
 1622.51794 Hz/cm

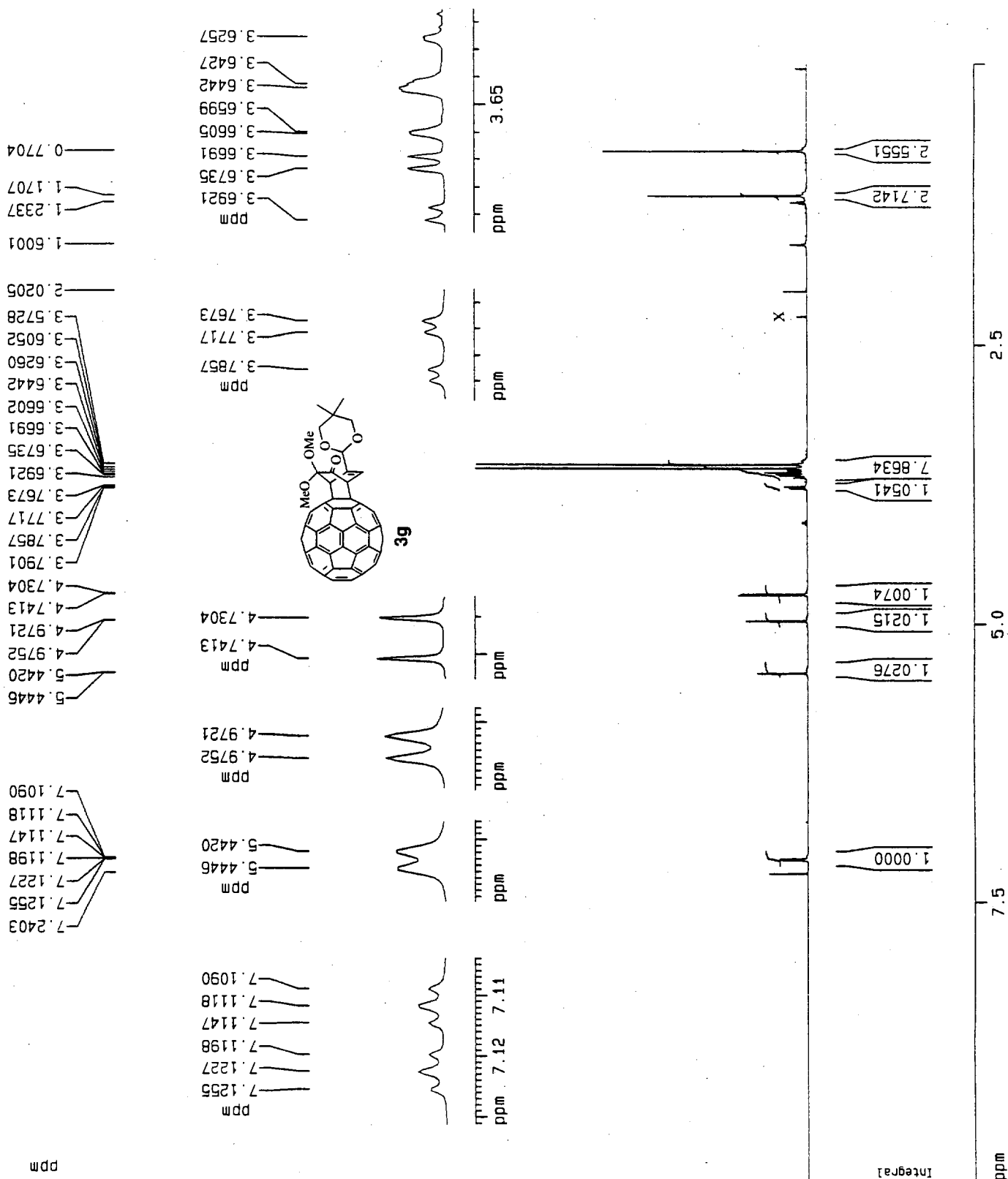
Acquisition Parameters  
 990918  
 5 mm TXI 13C  
 spect  
 7.30  
 32768  
 zg  
 CDC13  
 32  
 0  
 8389.262 Hz  
 0.256020 Hz  
 1.9530228 sec  
 512  
 59.600 usec  
 4.50 usec  
 300.0 K  
 1.50000000 sec  
 5.00 usec  
 600.2481585 MHz  
 1H  
 6.00 dB  
 Processing parameters  
 32768  
 600.2456842 MHz  
 EM  
 0  
 0  
 0.50 Hz  
 1.00  
 Plot parameters  
 20.00 cm  
 10.000 ppm  
 6002.45 Hz  
 0.000 ppm  
 0.00 Hz  
 0.50000 ppm/cm  
 300.12283 Hz/cm



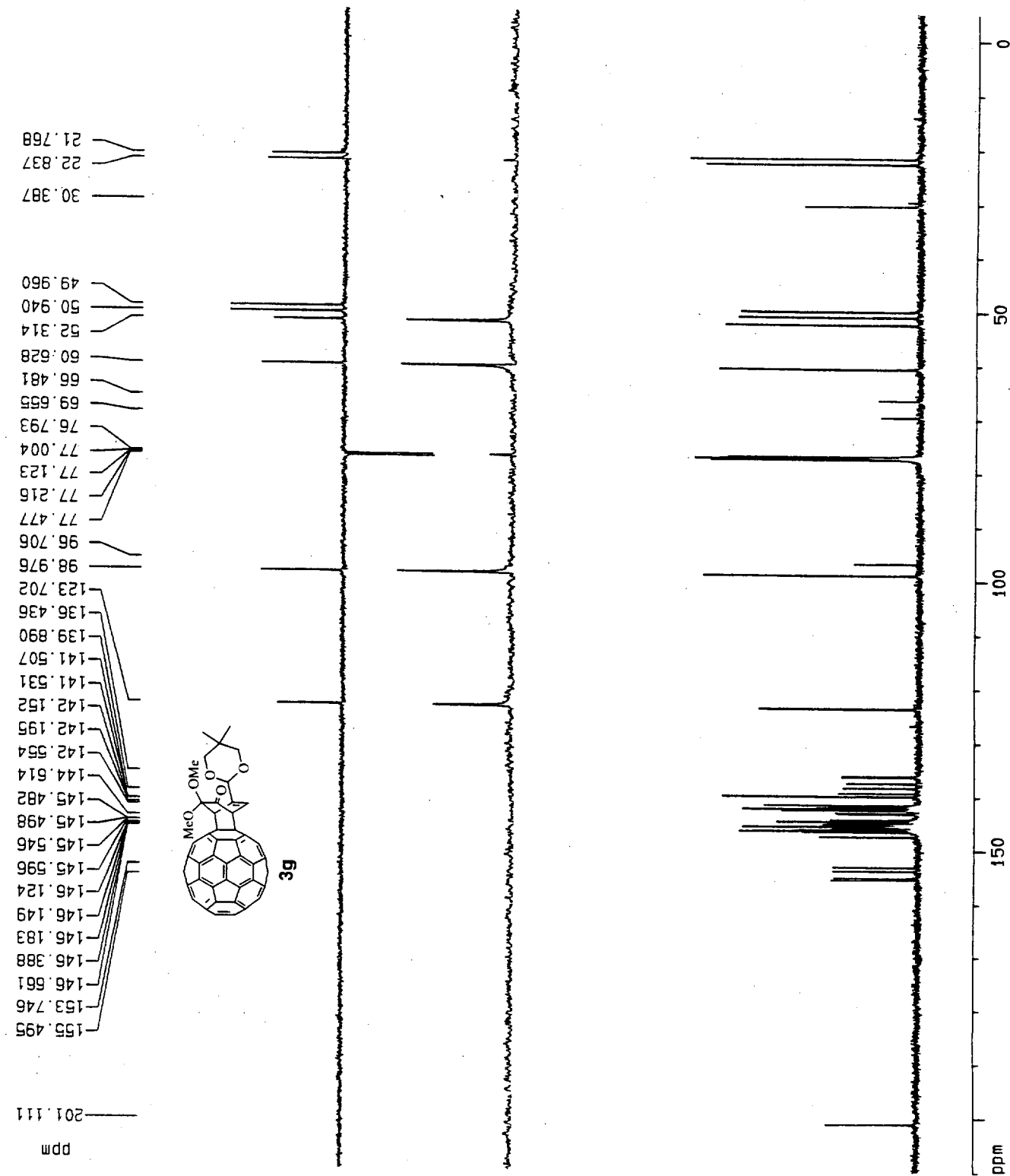
11



Acquisition Parameters  
 990918  
 21.50  
 spect  
 5 mm TXI 13C  
 ZDPG  
 65536  
 CDC13  
 13248  
 0  
 37878.789 Hz  
 0.577994 Hz  
 0.8651252 sec  
 2048  
 13.200 usec  
 4.50 usec  
 300.0 K  
 0.00002000 sec  
 25.00 dB  
 3.00000000 sec  
 garp  
 100.00 usec  
 600.2461590 MHz  
 1H  
 120.00 dB  
 22.00 dB  
 5.40 usec  
 150.9469230 MHz  
 13C  
 0.00 dB  
 0.03000000 sec  
 Processing parameters  
 32768  
 150.9316945 MHz  
 EM  
 0  
 3.00 Hz  
 0  
 0.50  
 Plot parameters  
 20.00 cm  
 210.000 ppm  
 31695.70 Hz  
 -5.000 ppm  
 -754.66 Hz  
 10.75000 ppm/cm  
 1622.51794 Hz/cm

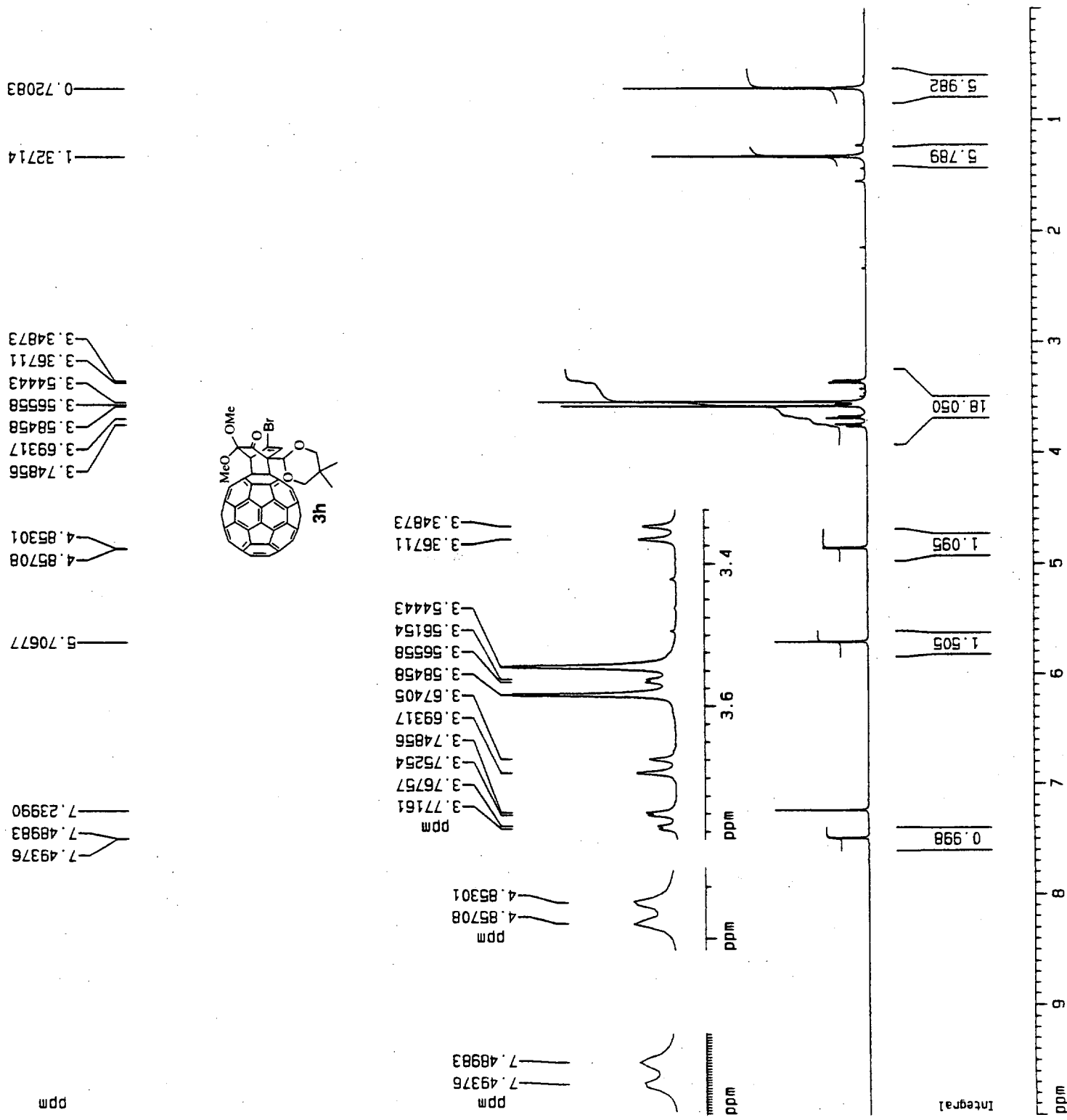


14



Acquisition Parameters  
 990919  
 12.15  
 spect  
 5 mm TXI 13C  
 200g  
 65536  
 CXX13  
 157  
 0  
 37878.789 Hz  
 0.577984 Hz  
 0.8651252 sec  
 2048  
 13.200 usec  
 4.50 usec  
 300.0 K  
 0.00002000 sec  
 25.00 dB  
 3.50000000 sec  
 98p  
 100.00 usec  
 600.2481590 MHz  
 1H  
 120.00 dB  
 22.00 dB  
 5.40 usec  
 150.9469230 MHz  
 13C  
 0.00 dB  
 0.03000000 sec  
 Processing parameters  
 65536  
 150.9319027 MHz  
 EM  
 0  
 3.00 Hz  
 0  
 0.50  
 Plot parameters  
 20.00 cm  
 210.000 ppm  
 31695.70 Hz  
 -5.000 ppm  
 -754.66 Hz  
 10.75000 ppm/cm  
 1622.51794 Hz/cm

15



Data Parameters  
 C60-6Ket  
 1  
 2

Acquisition Parameters  
 991020  
 5.27  
 spect  
 5 mm TXI 13C  
 zg  
 16384  
 CDCl3  
 15  
 0  
 7183.900  
 800  
 0.438471 Hz  
 1.1403754 sec  
 256  
 69.600 usec  
 4.50 usec  
 300.0 K  
 1.00000000 sec  
 10.00 usec  
 600.2481585 MHz

Processing parameters  
 16384  
 500.2458837 MHz  
 EM  
 0  
 0.50 Hz  
 0  
 1.00

Plot parameters  
 20.00 cm  
 10.000 ppm  
 6002.46 Hz  
 0.000 ppm  
 0.00 Hz  
 0.500000 ppm/cm  
 300.12283 Hz/cm

16

